

# INDUSTRIAL GRADE TOOLS

ENGINEER

VENDOR  
MANAGED  
TOOL  
SYSTEMS

**PRODUCT CATALOG**  
ENGINEER STANDARD SETS, KITS & OUTFITS

800.295.9595 | [KIPPERTOOL.COM](http://KIPPERTOOL.COM) | GSA ADAVANTAGE | DoD EMAIL



**KIPPERTOOL®**

*The Leader in Military Tool Systems*



## TABLE OF CONTENTS

<b>INDUSTRIAL SETS &amp; TOOL KITS</b>	<b>15</b>
<b>CARPENTER'S SQUAD TOOL KIT</b>	<b>16</b>
<b>CARPENTER'S PLATOON TOOL KIT</b>	<b>17</b>
<b>CORDLESS 18 VOLT INT'L POWER TOOL KIT</b>	<b>17</b>
<b>WOODWORKING TOOL KIT</b>	<b>17</b>
<b>MULTI-SAW &amp; DRILL TOOL KIT</b>	<b>18</b>
<b>TABLE SAW &amp; ROUTER TOOL KIT</b>	<b>18</b>
<b>PNEUMATIC NAILERS &amp; COMPRESSOR TOOL KIT</b>	<b>19</b>
<b>ELECTRICIAN'S TOOL KIT</b>	<b>19</b>
<b>PLUMBER'S TOOL KIT</b>	<b>19</b>
<b>PIPEFITTERS TOOL KIT 1/8" TO 2" DIA. PIPE</b>	<b>20</b>
<b>PIPEFITTER'S TOOL KIT 2-1/4" TO 4" DIA. PIPE</b>	<b>21</b>
<b>PIONEER LAND CLEARING &amp; BUILDING ERECTION TOOL KIT</b>	<b>21</b>
<b>PIONEER GENERAL LABOR TOOL KIT</b>	<b>21</b>
<b>PIONEER MANUAL LABOR TOOL KIT</b>	<b>22</b>
<b>MASON &amp; CONCRETE FINISHERS TOOL KIT</b>	<b>23</b>
<b>18 VOLT IMPACT TOOL KIT</b>	<b>23</b>
<b>36 VOLT INT'L IMPACT KIT</b>	<b>24</b>
<b>18 VOLT METAL WORKING KIT</b>	<b>24</b>
<b>20 VOLT CORDLESS POWER TOOL KIT</b>	<b>25</b>
<b>KIT PIO-BOBCAT PACKAGE</b>	<b>26</b>
<b>S510 SKID STEER LOADER ATTACHMENTS</b>	<b>27</b>
<b>AUGER ATTACHMENT</b>	<b>27</b>
<b>HYDRAULIC BREAKER</b>	<b>27</b>
<b>OPTIONAL SEPARATE ITEMS</b>	<b>28</b>
<b>VIBRATORY ROLLER</b>	<b>28</b>
<b>BACKHOES</b>	<b>28</b>
<b>ANGLE BROOM</b>	<b>28</b>

# INDUSTRIAL SETS & TOOL KITS

## **ATTENTION:** PLEASE REVIEW THIS STATEMENT FOR SETS, KITS & OUTFITS

The Engineer Division of the Directorate of Combat Development, USA MANSCEM is responsible for developing and reviewing sets, kits and outfits. In 1997, The tool sets listed below were reviewed with the intent to modernize them in response to that charter. So as not to impose a burden on the unit commander responsible for procuring the sets, it was decided to utilize a new NSN, allowing the commander to upgrade the unit's capabilities as funds became available. (Reference Engineer Professional Bulletin Aug 1999, Nov 1999)

Kipper Tool Company (KTC) developed the tool sets to meet those requirements and obtained the NSNs. KipperTool® markets the modernized tool sets through GSA as VMTS. They are made available to units at a time when the pace of unit deployments has accelerated and are showing that the utilization of the state-of-the-art tools speed mission accomplishment.

<b>LIN</b>	<b>Legacy NSN</b>	<b>Improved NSN</b>
W34648	5180-00-293-2875	5180-01-447-2200
W34511	5180-00-293-2873	5180-01-447-2199
T16988	3320-00-270-8630	5180-01-441-2123
<i>(Replaces Tool Load Only - Retain Trailer &amp; Generator)</i>		
W36977	5180-00-313-3045	5180-01-461-8105
W44923	5180-00-596-1504	5180-01-461-8110
W49033	5180-00-545-8647	5180-01-467-4676
W48622	5180-00-596-1501	5180-01-461-8108
W48759	5180-00-596-1509	5180-01-461-8107
W48348	5180-00-596-1546	5180-01-467-4685
W48211	5180-00-596-1537	5180-01-467-4684
W48074	5180-00-596-1539	5180-01-467-4677
W43974	5180-00-408-1350	5180-01-587-8026

## **Need Help? Call 800-295-9595**

If you have one of the new Engineer Tool Systems, a Replenishment Kit for each has been completed and assigned National Stock Numbers. Listed below will match up your SKO NSN with it's Replenishment Kit NSN. Each Replenishment Kit corresponds with each tool, container, fit, form and function of it's parent SKO. This will eliminate hours of research and erroneous ordering.

<b>SKO Name</b>	<b>SKO NSN</b>	<b>Replenishment Kit NSN</b>
Carpenter's Squad Tool Kit	NSN: 5180-01-447-2200	NSN: 5180-01-513-7684
Carpenter's Platoon Tool Kit	NSN: 5180-01-447-2199	NSN: 5180-01-513-7680
Cordless 18 Volt Power Tool Kit	NSN: 5180-01-436-8531	NSN: 5180-01-513-7689
Complete Woodworking Kit	NSN: 5180-01-441-2123	NSN: 5180-01-513-7692
Table Saw & Router Tool Kit	NSN: 5180-01-441-2122	NSN: 5180-01-513-7696
Multi-Saw & Drill Tool Kit	NSN: 5180-01-441-2125	NSN: 5180-01-513-7703
Electrician's Tool Kit	NSN: 5180-01-461-8105	NSN: 5180-01-514-1430
Pneumatic Nailer & Compressor Kit	NSN: 5180-01-441-2124	NSN: 5180-01-513-7706



## CARPENTER'S SQUAD TOOL KIT

A Carpenter 's Tool Set is authorized to every company level unit in the Army. It is the principal item of equipment provided to general construction and combat engineer squads, packing and crating sections, shipping sections, confinement facilities, medical rehabilitation sections, and grave registration sections.

- Weight: 198 LBS.
- Cubic Feet: 23.3

P/N: KIT 5300-R  
NSN: 5180-01-447-2200



## CARPENTER'S PLATOON TOOL KIT

The Kipper Carpenter Platoon Power Tool Set contains Military Type Classified and UL approved items, it standardizes equipment and provides ILS supportability, it supports instant inventory and contains a permanently affixed diagram showing the location of each component in its loaded position and includes identification data.

A Replenishment Kit is available for the Carpenter's Platoon Power Tool Set as a separate item. The Kit includes all the expendable items, drill bits and saw blades.

- Weight: 305 LBS.
- Cubic Feet: 36.1

P/N: KIT 6000-R  
NSN: 5180-01-447-2199



## CORDLESS 18 VOLT INT'L POWER TOOL KIT

The Kipper Cordless 18 Volt Power Tool Set represents a unique kitted capability never available to military units before. It supplements the Kipper Carpenter's Hand Tool Set containing COTS battery powered saws, drills, and lights with special purpose 220 volt chargers.

The Tool Set includes a hammer/drill/drivers, a 6-1/2" circular saw, a reciprocating saw, a flexible neck floodlight, an extension cord, a measuring tape, a speed square, goggles, and numerous blades and bits.

- Weight: 148 LBS
- Cubic Feet: 23.3

P/N: KIT CDSK-WA  
NSN: 5180-01-436-8531



## WOODWORKING TOOL KIT

The CTK consists of 4 storage and transportation chests from which work teams of soldier-carpenters can withdraw a variety of saws, drills, nail guns, and supporting tools for use at dispersed sites. The four cases contribute to overall modularity by packaging selected supporting items in single packages to support task assignment for teams/squads. The CTK contains the equipment necessary to establish and operate a carpentry fabrication shop.

- Weight: 1113 LBS.
- Cubic Feet: 105.6

P/N: KIT TMSEWWBM-3KT-R  
NSN: 5180-01-441-2123





## MULTI-SAW & DRILL TOOL KIT

The Kipper Multi-Saw and Drill Tool Set provides specific tools, common to the complete carpenter shop set, to supplement additional carpentry teams in modular fashion. Carpenter teams can be deployed with this tool set without impacting the capabilities of the parent unit and accomplish construction tasks that involve sawing and drilling with greater levels of accuracy and higher production rates. This Tool Set could be used to establish a fabrication shop to assemble framing, flooring and roofing trusses.

- Weight: 580 LBS.
- Cubic Feet: 46.8

**P/N: KIT MCRCSDS-39TK-R**  
**NSN: 5180-01-441-2125**



## TABLE SAW & ROUTER TOOL KIT

The Kipper Table Saw & Router Tool Set provides specific tools, common to the complete carpenter shop set, to supplement additional carpentry teams in modular fashion. Carpenter teams can be deployed with this Tool Set without impacting the capabilities of the parent unit and accomplish finish carpentry tasks with greater levels of accuracy and higher production rates. This Tool Set is used to support a fabrication shop - making repetitive, accurate cuts and intricate cuts; and also trims, moldings, and other piecemeal work of both a functional and ornamental nature.

- Weight: 276 LBS.
- Cubic Feet: 35

**P/N: KIT TSRJS-19TK-R**  
**NSN: 5180-01-442-2122**



## PNEUMATIC NAILERS & COMPRESSOR TOOL KIT

The Kipper Pneumatic Nailer & Compressor Tool Set provides specific tools, common to the complete carpenter shop set, to supplement additional carpentry teams in modular fashion. Carpenter teams can be deployed with this tool set without impacting the capabilities of the parent unit and accomplish construction tasks that involve nailing and stapling with greater levels of efficiency and higher production rates. This Tool Set could be used to establish roofing teams, siding teams and truss fabrication teams.

- Weight: 377 LBS.
- Cubic Feet: 33.3

P/N: KIT PNC-34TK-R  
NSN: 5180-01-441-2124



## ELECTRICIAN'S TOOL KIT

The Kipper Electrician's Tool Set provides US military, contractor and indigenous construction forces with tools for performing interior electrical power installation and repair tasks in residential dwelling and commercial facilities. It enables the installation of electrical wiring in Theater of Operations (TO) constructions, in accordance with commercial code or applicable policies, and repair existing wiring fixtures and circuitry to current standards, from the point of connection to the facility throughout the structure. It is also used by prime power plant operators/maintainers and high voltage linesmen. It is used to create navigational lighting, perimeter lighting, security point lighting and search lighting that can be turned on or off by a switch or timer.

- Weight: 526 LBS.
- Cubic Feet: 82.3

P/N: KIT ELS1000-R  
NSN: 5180-01-461-8105



## PLUMBER'S TOOL KIT

The CTK consists of 4 storage and transportation chests from which work teams of soldier-carpenters can withdraw a variety of saws, drills, nail guns, and supporting tools for use at dispersed sites. The four cases contribute to overall modularity by packaging selected supporting items in single packages to support task assignment for teams/squads. The CTK contains the equipment necessary to establish and operate a carpentry fabrication shop.

- Weight: 409 LBS.
- Cubic Feet: 46.0

P/N: KIT PLU1000-R  
NSN: 5180-01-467-4676





Field Office Site Box  
Cubic Feet: 192 - Weight: 713

## PIPEFITTERS TOOL KIT 1/8" TO 2" DIA. PIPE

The Pipefitter's Tool Set is for 1/8" to 2" DIA Pipe and TAA Compliant for purchase for the US Government. This kit contains tools for cutting, threading, and brazing.

- Weight: 359 LBS.
- Cubic Feet: 45.1

P/N: KIT PLS1000-R  
NSN: 5180-01-461-8108





## PIPEFITTER'S TOOL KIT 2-1/4" TO 4" DIA. PIPE

The Pipefitter's Tool Set is for 2-1/4" to 4" DIA Pipe and TAA Compliant for purchase for the US Government. This kit contains tools for cutting, threading, and brazing.

- Weight: 447 LBS.
- Cubic Feet: 28.9

P/N: KIT PLP1000-R  
NSN: 5180-01-461-8107



## PIONEER LAND CLEARING & BUILDING ERECTION TOOL KIT

The Kipper Pioneer Land Clearing & Building Erection Set provides tools and equipment for construction engineer squads to perform land clearing and building erection tasks. The Tool Set is uniquely configured to support the wide variety of horizontal and vertical. It contains specifically chosen to accomplish expected land clearing and building erection/construction tasks by squad members without supplement by other tool sets. It specifically supports hand construction and emplacement of obstacles, barb wire entanglements and fighting positions facility, port, LOC and airfield construction and rehabilitation site clearing, layout and clean-up timber construction, rigging and rappelling and site drainage.

- Weight: 709 LBS.
- Cubic Feet: 80.0

P/N: KIT PIO1002  
NSN: 5180-01-467-4685



## PIONEER GENERAL LABOR TOOL KIT

The Kipper Pioneer General Labor Tool Set provides US, contractor and indigenous forces with multiples of simple pioneer tools to construct field fortifications, fighting positions and shelters, emplace barb wire, create simple field works, clear fields of fire, create protective and defensive obstacles, and build force protection devices such as lane separators and blast protectors

- Weight: 928 LBS.
- Cubic Feet: 72.0

P/N: KIT PIO1004  
NSN: 5180-01-467-4684





## PIONEER MANUAL LABOR TOOL KIT

The Kipper Pioneer Manual Labor Tool Set provides US, contractor and indigenous forces with additional specialty hand tools, powered tools and pioneer tools to enhance heavy timber construction as found in forestry operations, timber bridging and rafting, retaining walls, wharfing, field fortifications, fighting positions and shelters, field works, corduroy roads, lanes of fire, protective and defensive obstacles, towers, fencing, pole setting, force protection devices such as lane separators and blast protectors.

The centerpiece of the Tool Set is a Bobcat Model S510 Skid Steer with 4-in-1 bucket, hydraulic breaker, fork lift, auger, and metal over tracks. The hydraulic breaker has a nail point, asphalt cutter, clay spade, and special picket driving points. A clear plastic front shield is included for operator safety while using the breaker. The auger comes with different diameter bits and an extension. Other attachments are available for specific tasks - backhoe, trencher, concrete mixer, grader, grinder, vibratory compactor, sweeper brooms, and demolition grasp - and can be special ordered with the set.

○ PIO1003 Includes S510 Bobcat

**P/N: KIT PIO1003**  
**NSN: 5180-01-467-4677**  
**w/ KIT PIO-BOBCAT**

**P/N: KIT PIO1003-T**  
**NSN: 5180-01-467-4679**  
**w/o KIT PIO-BOBCAT**



**KIT PIO-BOBCAT PACKAGE on page 26**

## MASON & CONCRETE FINISHERS TOOL KIT

The Kipper Masonry & Concrete Finisher's Tool Set provides US, contractor and indigenous construction forces with masonry and concrete working tools for flatwork and vertical block, brick, and reinforced concrete work. It enables construction troops to work in austere or developing theaters or in situations without or with limited electrical power sources.

- 3 Boxes
- Contains Tools for 6 Masonry Specialists

P/N: KIT MAS1000-R  
NSN: 5180-01-461-8110



## 18 VOLT IMPACT TOOL KIT

This kit is a Cordless 18 Volt Powered Impact Tool Kit that is TAA Compliant for purchase for the US Government. A 220V converter is included for charging capability in any theater. This Kit includes name brand tools from Dewalt and STP!

- 300 ft-lbs of maximum torque
- 110V and 220V plug
- 15 Minute Quick Charger
- Metric and Standard Deep Socket sets
- Weight: 80 LBS.
- Cubic Feet: 3.0

P/N: KIT IMPACT TOOL-18V  
NSN: 5180-01-587-8007





## 36 VOLT INT'L IMPACT KIT

The KipperTool Cordless 36 Volt Powered Impact Tool Kit contains DeWalt heavy duty cordless impact wrench, metric & standard deep sockets, and 110/220 volt power compatibility. This set is TAA Compliant for purchase by the US Government.

- 110V and 220V plug
- Metric and Standard Deep Socket sets

**P/N: KIT IMPACT TOOL-36V**  
**NSN: 5180-01-587-8009**



## 18 VOLT METAL WORKING KIT

The KipperTool 18 Volt Metal Working Kit includes grinder, metal saw, shears, and other accessories. It has safety gear, and consumables. It features 110 & 220 volt charging capability.

- Step Down Converter 220/110
- Cordless Saw, Cut-Off Tool, & Grinder
- Extension Cord
- Safety Glasses

**P/N: KIT METAL WORKING-18V**  
**NSN: 5180-01-587-8006**





## 20 VOLT CORDLESS POWER TOOL KIT

Includes DeWalt 20V Hammerdrill, LED Work Light, Impact Driver, Reciprocating Saw, Circular Saw, Framing Nailer, and other accessories all in one kit. This Kit is engineered with Cut Foam and Tool Location Guide for Rapid Inventory.



- Includes 4 20 Volt Batteries and Chargers.
- Lightweight case
- Industrial Grade Manufacturers
- Rapid Inventory Foam

P/N: KIT-CDSK-WA-20V-R2



## LINEMAN'S POLE CLIMBING KIT

The Kipper Lineman's Pole Climbing Kit provides COTS OSHA compliant line-man's pole climbing equipment for electricians, riggers, communication equipment installers. It replaces an unsafe and obsolete LIN (Line Item Number) equipment set. The Kit is a stand alone item and a component in other tool sets.



The principal component is a newly designed strap-on pole and tree climbing, leg harness that completely encases the ankle and calf to provide extended support. It is fully adjustable, neoprene lined, straps under the boot, and surrounds the calf with a rigid support. It has interchangeable gaffs to match the material to be climbed. The Kit includes a lineman's work belt, pole/safety strap, and work gloves meeting mandated safety standards.

P/N: KIT LPC  
NSN: 5180-01-587-8026





**KIT PIO-BOBCAT PACKAGE  
(28 Items included)**

Bobcat® S510 skid-steer loader is designed to complete a wide-variety of demanding tasks. This M-Series radius lift path loader is a popular size for excavating and earth-moving work while the long wheel base gives the operator a smooth ride. Operate most attachments with 17 gpm of auxiliary hydraulic flow.

**Better Visibility:** Visibility has been significantly increased in all directions. The rear window is 14% larger and the size of the top window is now 43% larger, providing a big advantage when loading a truck or using attachments with raised lift arms. **Cab-Forward Design:** The new design moves the operator area closer to the attachment and gives you a better vantage point for your work area.

**Convenient Engine Speed Controls:** The engine speed control has been moved out in front of the operator, on the right-hand corner post of the cab.

**Fingertip Controls:** Attachments are more comfortable to operate, controlled easily and adjusted simply from the fingertip controls.

**Flexible Joystick Positioning / Seat-Mounted Joystick Control:** Joystick mounts on our SJC- equipped (Selectable Joystick Controls) machines slide forward and backward independent of the seat, adjusting to the individual comfort positions of different-sized operators. The seat-mounted joystick control provides flexible control through seat-mounted joysticks on models with optional SJC; as the suspension seat shifts up and down, the joysticks move with the seat.

Engine	
Engine Cooling	Liquid
Emissions Tier (EPA)	Tier 4
Engine Fuel	Diesel
Horsepower	49 HP
Turbocharged Engine	Yes

Performance	
Rated Operating Capacity	1650 lbs
Tipping Load	3300 lbs
Operating Weight	6213 lbs
Travel Speed	7.4 mph
Travel Speed (2-speed option)	11 mph

**P/N: KIT PIO-BOBCAT PACKAGE  
M/N: 01-590-6540**





## S510 SKID STEER LOADER ATTACHMENTS

### AUGER ATTACHMENT

- Ideal for installing fence posts, planting trees or digging footings for new decks
- Drills 6 to 48 in. diameter holes quickly and accurately
- Choose between direct drive and planetary options
- Hangs plumb on uneven terrain



### HYDRAULIC BREAKER

- Deliver hard-hitting performance
- Most models can quickly mount to loader or excavator
- Transmit lower noise and vibration levels
- Virtually maintenance-free
- 60 to 1000 ft.-lb. impact energy classes

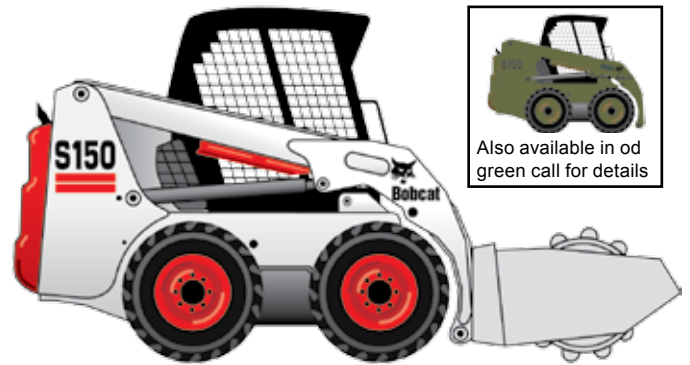




## Optional Separate Items

### VIBRATORY ROLLER

The roller is quick and easy to attach with the exclusive Bob-Tach mounting system. The Bobcat vibratory roller features either a smooth or padded drum. The roller is ideal for flatwork, trenching and asphalt patchwork contractors. For added versatility on the job, a bolt-on smooth outer shell is available for the 48" drum to convert it from a padded drum to a smooth drum.



### BACKHOES

Turn your Bobcat® Loader into a powerful excavator with a full line of backhoe models for all sizes of Bobcat Loaders. Here's a part-time attachment that can handle full-time excavation jobs. Maximum digging depths range from 5 to 11 feet. Rear stabilizers are available for certain loader models.



### ANGLE BROOM

Sweep a clean path economically. Put your Bobcat® loader to work and clean up almost everything in sight with the hydraulically-driven Angle Broom attachment. Use it to sweep driveways, sidewalks, parking lots, loading docks, warehouses, and more. Excellent for quick snow removal without damaging pavement surfaces.

